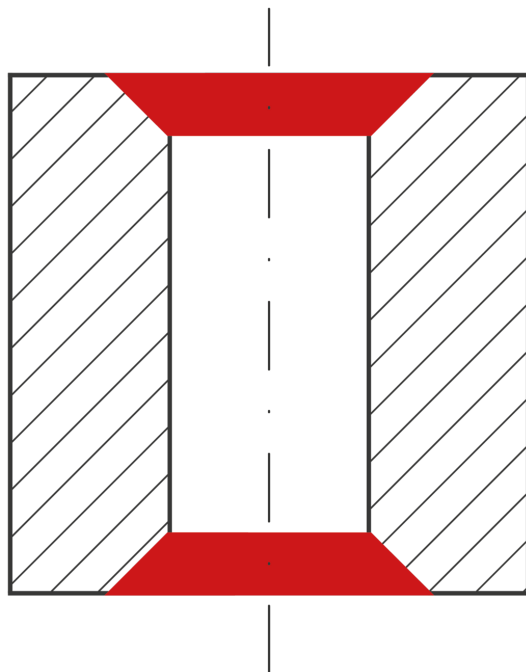




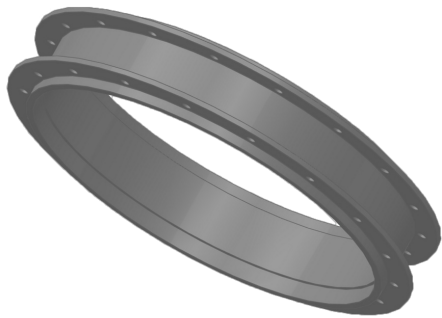
## Aircraft component

The replacement of the manual chamfering process has reduced production time.



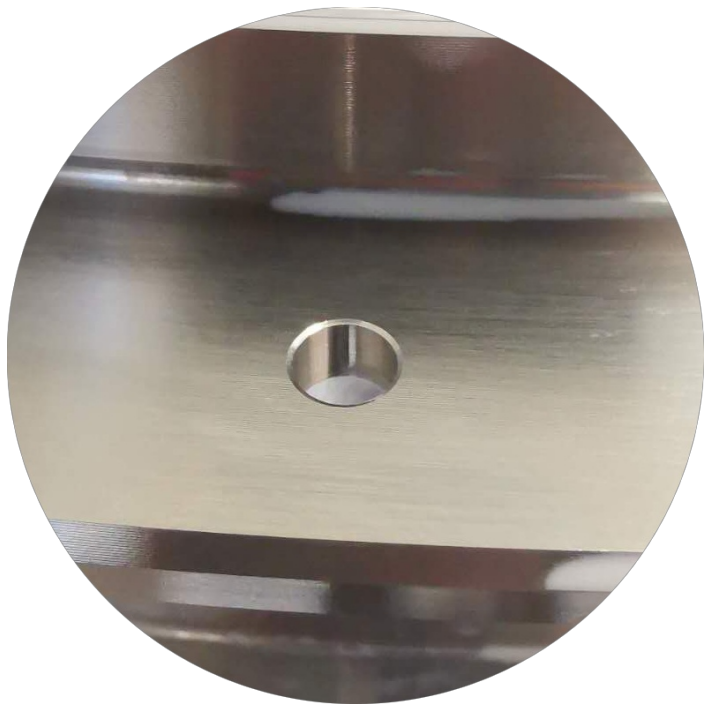
## Customer application

Previously, because of poor accessibility, the front and back chamfer of the bores had to be performed manually. This caused issues with adhering to the high aviation industry standards and caused long production cycles.



## Solution

This solution was accomplished with the DEFA chamfering tool (two-bladed) which assures highest quality and guarantees process-reliability. The parts can now be completed entirely on the CNC machine without the need for further manual chamfering.



## Customer benefit

The customer achieved the following improvements:

- Replacement of the manual process
- Reduction of the required production time
- Stabilisation of the process
- Improvement of the chamfer quality