

Press Release

2nd July 2014

AMB Trade Show Novelty

HEULE launches new generation of the successful COFA deburring tool

HEULE being pioneer of the back deburring continues to write the COFA success story. Its exclusive ability to deburr even and uneven bore edges in one single pass receives further features such as larger deburring capacity. Innovation does not exclude proven products.

After expanding its range downward to Ø 2mm HEULE has now revised the blade concept of the larger tools (bore Ø ≥ 6mm). The new design allows larger deburring capacities up to R1.5. The easily exchangeable blades enable different deburring capacities without changing the tool. Another new feature created by the HEULE R&D team is the deburring of threaded bores. The new tool range covers the ISO dimensions M8 up to M30 (bore Ø 6.7 mm to 26.3 mm).

The new design concept with blade support and blade also increases profitability. The modular setup as well as the extended tool life contribute to improve production efficiency. The optimized standard range with its reduced tool length is responsible for a further step towards best achievable deburring quality at best possible cutting data.

Press Contact:

Benno Zünd, Marketing
HEULE PRECISION TOOLS
9436 Balgach / Switzerland

Hall 1 Stand A12
www.heule.com

Press Release: HEULE launches new Generation of the successful COFA Deburring Tool

Images and Captions

Image 1: COFA Tool - New Generation

The COFA system allows reliable back and front deburring of even and uneven bore edges - now with larger deburring capacity, applicable also for threaded bores and with further increased efficiency. Photo: Heule.com

(File name: COFA-NG_kombi.tif)

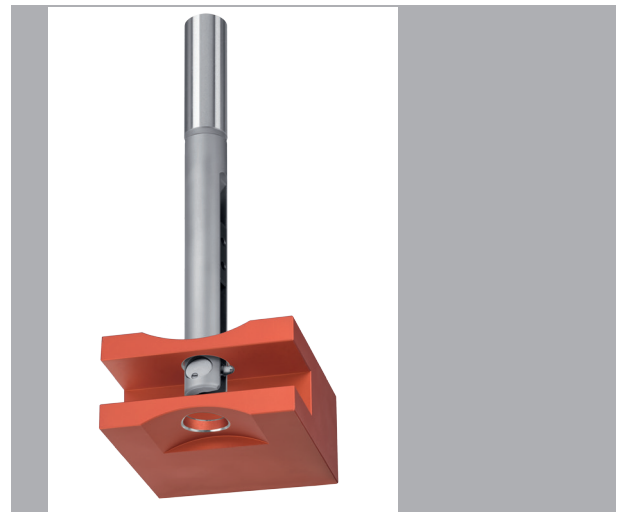


Image 2: Different deburring capacities thanks to exchangeable blades

The new design allows larger deburring capacities up to R1.5. Thanks to the easily exchangeable blades different deburring capacities are possible without changing the tool. Photo: heule.com

(File name: COFA_C20mit3Messer.tif)



Image 3: New Design Concept - proven principle.

The new design concept with blade support and blade also increases profitability. The modular setup as well as the extended tool life contribute to improve production efficiency. Photo: heule.com

(File name: COFA_Schnittmodell.tif)

